

UPDATED: April 1st, 2025

# Hakodate Airport ②

Bus No.

5



## Goryokaku Tower & Trappistine Convent Shuttle Bus



### 【Operating Period】

April 1st, 2025 -

#### NOTICE

- \* THE SERVICE of our bus line 5A works only weekends & holidays, not everyday.
- \* Please check the opening hours of each facility in advance.



### FARE

- ① Hakodate Sta. ④
- ② Goryokaku Tower
- ③ Hanabishi Hotel
- ④ Yunokawa Onsen
- ⑤ Nettai Shokubutsuen
- ⑥ Hakodate Airport
- ⑦ Trappistine Convent
- ⑧ Hakodate Milk Ice 118

#### 【AVAILABLE】

- ◎ Cash
- ◎ ICカード
- ◎ 1day/2days joint pass for Hakodate Bus & City Tram

No.5; Hakodate Sta. ④~Trappistine Convent

①	300	400	400	400	500	500	-
300	②	300	300	300	400	400	-
400	300	③	250	250	300	300	-
400	300	250	④	250	300	300	-
400	300	250	250	⑤	300	300	-
500	400	300	300	300	⑥	250	-
-	-	-	-	-	-	⑦	-
500	400	300	300	300	250	-	⑧

No.5A; Hakodate Sta. ④~Hakodate Milk Ice 118

### TIME SCHEDULE

※NOTICE; THE SERVICE of our bus line 5A works only weekends & holidays, not everyday.

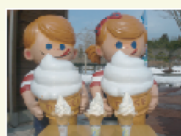
Hakodate Sta.-mae Bus Stop No.4 ⇒ Goryokaku Tower, Trappistine Convent, and Hakodate Milk Ice 118

	※	5A	5	5B	5	5B	5B	5	※	5A	5	5	5
Hakodate Sta.-mae ④	9:05	9:15	9:55	10:15	10:30	10:45	11:15	12:55	12:15	13:15	14:15		
Goryokaku Tower	9:20	9:30	10:10	10:30	10:45	11:00	11:30	13:10	12:30	13:30	14:30		
Hanabishi Hotel-mae	9:30	9:40		10:40			11:40	13:20	12:40	13:40	14:40		
Yunokawa Onsen	9:32	9:42		10:42			11:42	13:22	12:42	13:42	14:42		
Nettai Shokubutsuen-mae	9:33	9:43		10:43			11:43	13:23	12:43	13:43	14:43		
Hakodate Airport ②	9:43	9:51		10:51			11:51	13:31	12:51	13:51	14:51		
Trappistine Convent	-	10:00		11:00			12:00	-	13:00	14:00	15:00		
Hakodate Milk Ice 118	9:53							13:41					

Hakodate Milk Ice 118, Trappistine Convent, and Goryokaku Tower ⇒ Hakodate Sta.-mae

	5	5B	5	5B	※	5A	5	5	5	5	※	5A	5
Hakodate Milk Ice 118					10:32						14:27		
Trappistine Convent			10:10		-	11:10	12:10	13:10	14:10		-	15:10	
Hakodate Airport ②	9:30		10:19		10:42	11:19	12:19	13:19	14:19		14:37	15:19	
Nettai Shokubutsuen-mae	9:37		10:26		10:49	11:26	12:26	13:26	14:26		14:44	15:26	
Yunokawa Onsen	9:39		10:28		10:51	11:28	12:28	13:28	14:28		14:46	15:28	
Hanabishi Hotel-mae	9:41		10:30		10:53	11:30	12:30	13:30	14:30		14:48	15:30	
Goryokaku Tower	9:53	10:10	10:42	11:00	11:05	11:42	12:42	13:42	14:42		15:00	15:42	
Hakodate Sta.-mae ④	10:11	10:28	11:00	11:18	11:23	12:00	13:00	14:00	15:00		15:18	16:00	

### POPULAR ICE CREAM at Trappistine Convent



#### Value Information

@ Shop 'Shimin no Mori'

You can get a discount ticket in the bus which can be available at shop 'Shimin no mori'.  
If you use this ticket when buying ice cream, you can get ice cream with 50yen discount (380yen → 330yen)  
Please let driver know if you need it !

\*One ticket per person is required. \*There are only limited number of discount ticket, WE ASK you don't get it if you don't use discount ticket.

Shop 'Shimin no Mori' 042-0914, 327-1 Kami-Yunokawacho, Hakodate

### Producing delicious milk for 50 years

A shop selling dairy products inside the compounds of Hakodate Milk processing plant. The fresh milk from neighboring farms and the soft served ice cream made from this fresh milk taste exceptionally good !

Hakodate Milk Ice 118  
042-0912, 118 Nakanoscho, Hakodate



### ENJOY fresh milk & ice cream at Hakodate Milk Ice 118